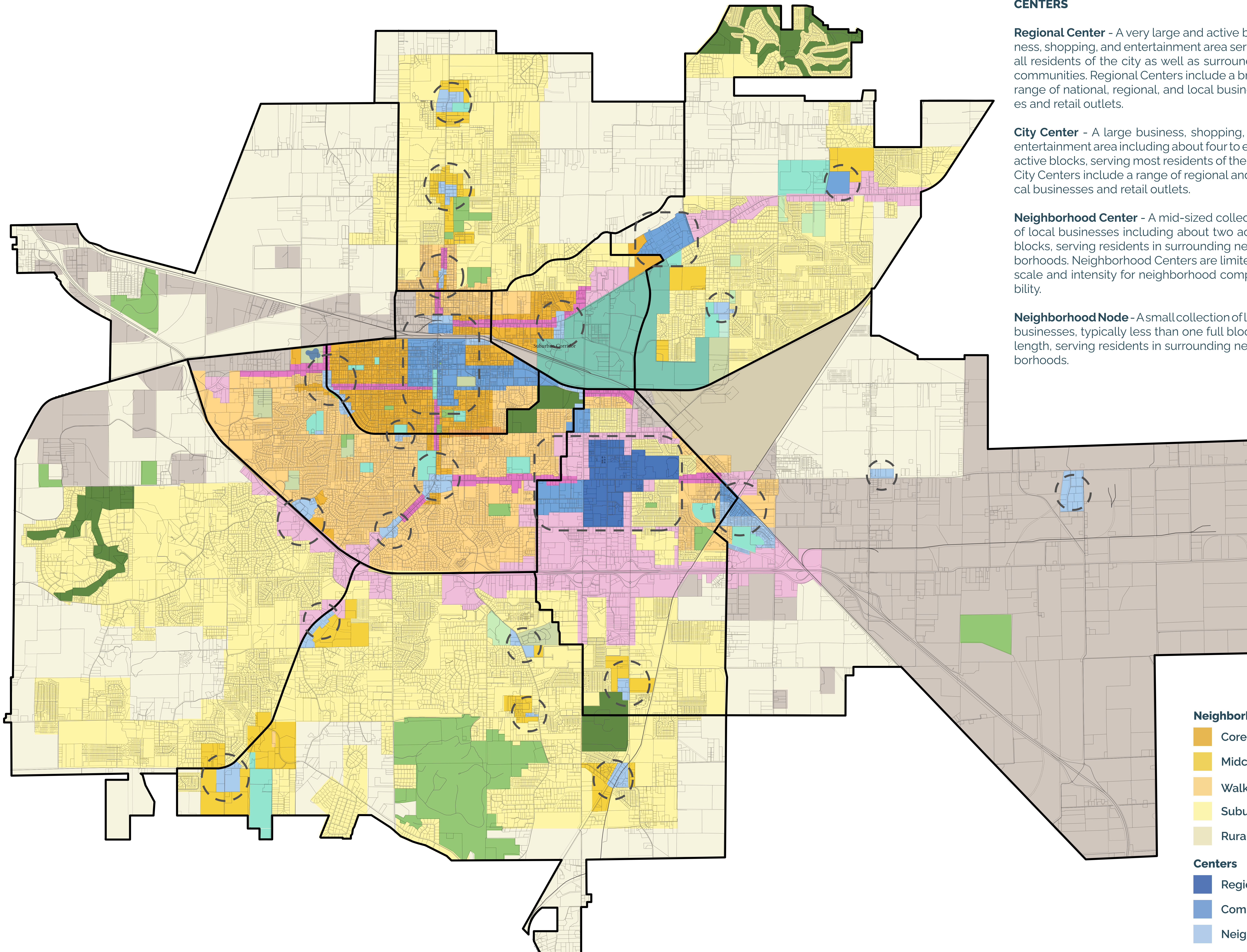


Proposed Future Land Use Map



CENTERS

Regional Center - A very large and active business, shopping, and entertainment area serving all residents of the city as well as surrounding communities. Regional Centers include a broad range of national, regional, and local businesses and retail outlets.

City Center - A large business, shopping, and entertainment area including about four to eight active blocks, serving most residents of the city. City Centers include a range of regional and local businesses and retail outlets.

Neighborhood Center - A mid-sized collection of local businesses including about two active blocks, serving residents in surrounding neighborhoods. Neighborhood Centers are limited in scale and intensity for neighborhood compatibility.

Neighborhood Node - A small collection of local businesses, typically less than one full block in length, serving residents in surrounding neighborhoods.

NEIGHBORHOODS

Core Neighborhood - Core Neighborhoods include a broad mix of housing types—compatibly-scaled single family homes, duplexes, townhomes, and small and mid-sized multi-family buildings in a neighborhood setting—along with occasional businesses, arranged on small, very walkable blocks.

Walkable Neighborhood - Walkable Neighborhoods include a relatively narrow mix of housing types—compatibly-scaled single family homes, townhomes, duplexes, and small multi-family buildings in a neighborhood setting—arranged on mid-sized blocks where walking and biking is possible for most daily needs.

Suburban Neighborhood - Suburban Neighborhoods, commonly referred to as subdivisions, consist mainly of single family homes on a variety of lot sizes. Street networks and sidewalks are inconsistent and destinations relatively far, limiting walking or biking options.

Rural & Estates - Rural & Estate areas are dispersed and generally undeveloped areas of the city. While they include occasional homes and clusters of homes, they are intended to have little future development, which is prioritized elsewhere.

CORRIDORS

Core Corridors - Core Corridors are located along primary mobility routes within central Jonesboro. They include a broad mix of housing types and businesses, serving as both destinations and transitions between neighborhoods.

Suburban Corridor - Suburban Corridors are areas comprising large format retail like big box stores, shopping malls, and strip centers, as well as residential developments serving regional commuters. Because these areas cater to those traveling primarily by car, they feature large parking areas and provide few options for walking or biking.

Neighborhoods

- Core
- Midcentury
- Walkable
- Suburban
- Rural & Estates

Centers

- Regional
- Community
- Neighborhood

Corridors

- Core
- Suburban

Other

- University
- Other Institutional

Industrial

- Industrial

- Airport

- Activity Nodes